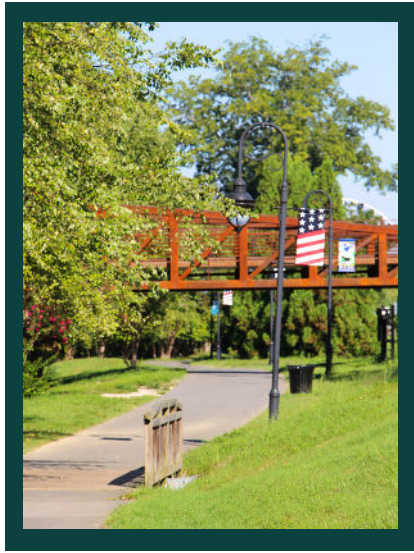


The Pigeon Forge Greenway connects visitor and residents to several important landmarks around Pigeon Forge, including: Dollywood, The Pigeon Forge Community Center, The Island in Pigeon Forge, The LeConte Event Center, and

Patriot Park with access to various restaurants, attractions, and lodging along the way. There are additional Greenway trails located at Wear Farm Park as well. Restroom facilities are available at the Pigeon Forge Community Center, The Island in Pigeon Forge, Patriot Park, and Wear Farm Park.



## GREENWAY TRAILS RULES:

Greenway trails are open from sunrise to sunset.

Motorized vehicles are not allowed on trails.

Bikers are to travel at a safe speed (max. 15 MPH).

Bikers always yield to pedestrians on the trails.

Keep right and pass on the left.

Politely announce yourself before passing on the greenway.

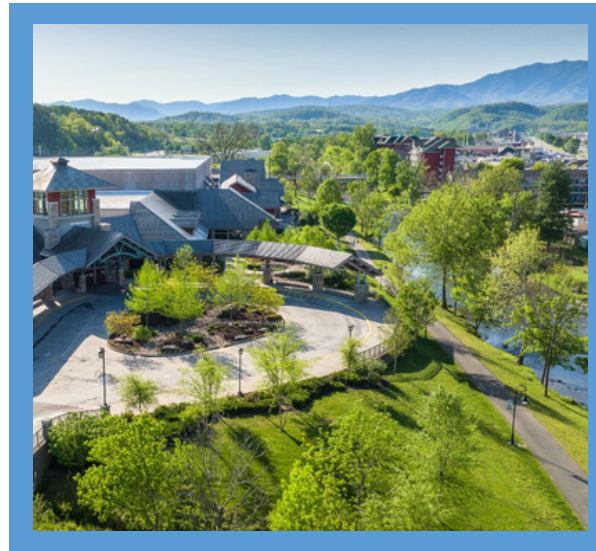
Remove your pet's waste.

Keep pets on a short leash.

The consumption or possession of alcoholic beverages on the greenway trails is prohibited.

Report any suspicious incidents to 911.

## PIGEON FORGE PARKS & RECREATION



170 Community Center Drive  
Pigeon Forge, TN 37863

Phone: 865-429-7373

Email: [parksrec@cityofpigeonforgetn.gov](mailto:parksrec@cityofpigeonforgetn.gov)

[www.cityofpigeonforge.com](http://www.cityofpigeonforge.com)

## Pigeon Forge Parks & Recreation



## PIGEON FORGE GREENWAY

Map & Information



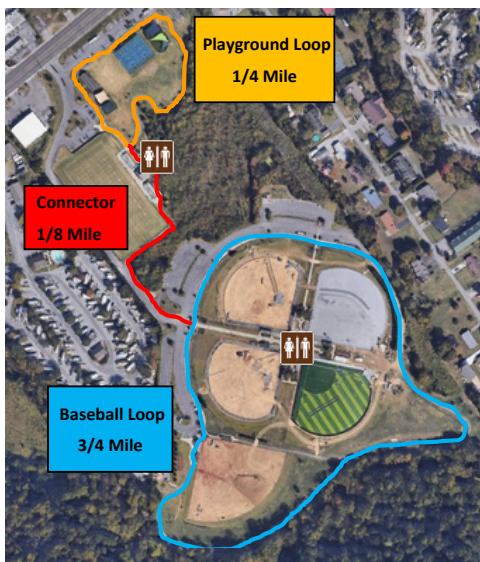
☎ 865-429-7373

# PIGEON FORGE GREENWAY SYSTEM



The Pigeon Forge Greenway System includes over 6 miles of trails that take patrons along the beautiful West Prong of the Little Pigeon River, around Patriot Park, behind the Community Center, and throughout Wear Farm Park.

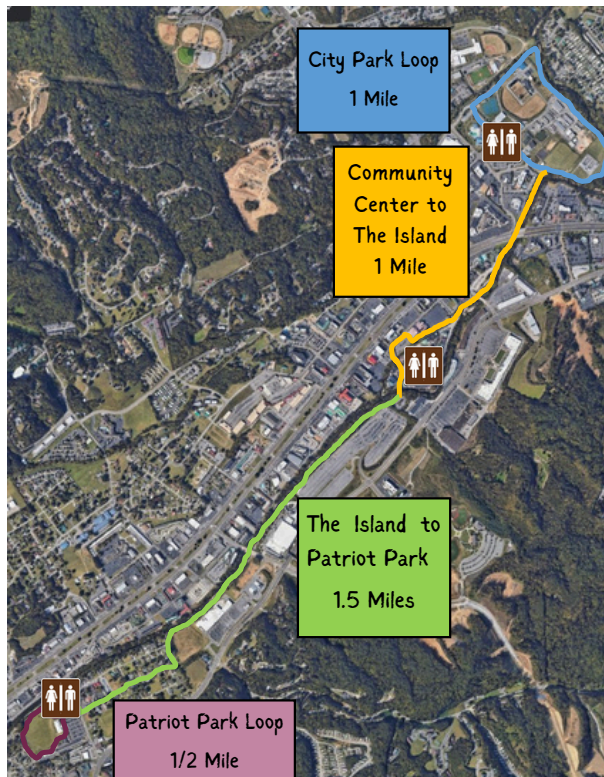
## GREENWAY ROUTE



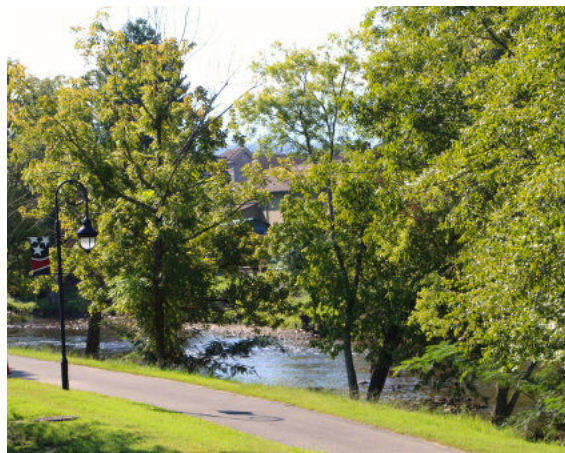
## GREENWAY ROUTES

There is another section of Greenway following Veterans Blvd, connecting with the Sevierville Greenway System at Centerview Rd, ending at Goldrush Rd across the street from Dollywood, Splash Country, and DreamMore Resort.

# Map of the Pigeon Forge Riverwalk Greenway



## GREENWAY ROUTES RESTROOMS



# THE ISLAND IN PIGEON FORGE



## GREENWAY ROUTE

The Pigeon Forge Greenway runs directly through The Island in Pigeon Forge. Follow the large sidewalk in front of the Margaritaville Island Inn parking area, travel across both bridges at The Island, and the Pigeon Forge Greenway will reconnect at the main parking area of The Island.

For news on the exciting programs taking place along the Pigeon Forge Greenway, contact the Pigeon Forge Parks and Recreation Department.

Phone: 865-429-7373

Email: [parksrec@cityofpigeonforgetn.gov](mailto:parksrec@cityofpigeonforgetn.gov)  
[www.cityofpigeonforge.com](http://www.cityofpigeonforge.com)