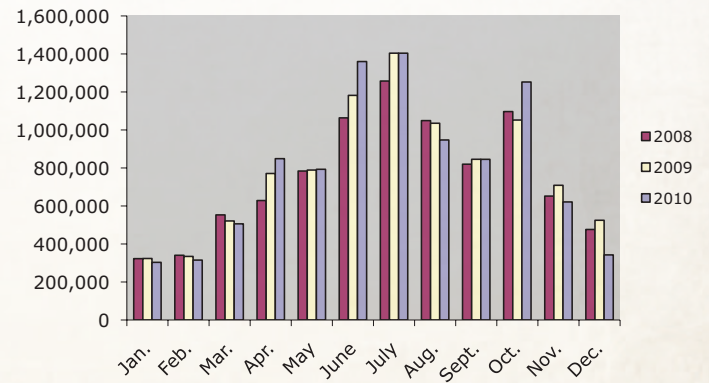


# Great Smoky Mountains National Park

Great Smoky Mountains National Park is the nation's most visited national park, with more than twice the visitation of the second most visited park, Grand Canyon National Park. Annual visitation to Great Smoky Mountains National Park has remained steady for the last decade. In 2009, the park celebrated its 75th Anniversary.



## 2010 GREAT SMOKY MOUNTAINS VISITATION

Month	Visitor Count	% of Change
January	303,318	-6
February	239,587	-28
March	505,950	-3
April	848,946	10
May	792,980	1
June	1,359,978	15
July	1,403,978	0
August	947,311	-9
September	845,410	0
October	1,252,357	19
November	621,211	-12
December	342,512	-35
Total	9,463,538	0

## 2008 GREAT SMOKY MOUNTAINS VISITATION

Month	Visitor Count	% of Change
January	322,865	-8
February	340,558	-1
March	553,078	-2
April	628,593	-10
May	783,847	-3
June	1,063,589	-5
July	1,257,396	-4
August	1,049,206	4
September	819,816	-14
October	1,096,711	0
November	652,023	-4
December	476,328	8
Total	9,044,010	-4

## 2009 GREAT SMOKY MOUNTAINS VISITATION

Month	Visitor Count	% of Change
January	323,614	0
February	334,515	-2
March	521,140	-6
April	770,858	23
May	788,974	1
June	1,181,938	11
July	1,404,034	12
August	1,035,277	-1
September	845,655	3
October	1,052,137	-4
November	708,797	9
December	524,771	10
Total	9,491,710	5

## PRIOR YEARS' GSMNP VISITATION

Month	Visitor Count	% of Change
1990	8,151,769	N/A
1991	8,654,459	6
1992	8,931,690	3
1993	9,282,848	4
1994	8,628,174	-7
1995	9,080,422	5
1996	9,265,670	2
1997	10,010,074	8
1998	9,989,396	0
1999	10,283,600	3
2000	10,175,816	-1
2001	9,197,679	-10
2002	9,316,416	1
2003	9,366,845	1
2004	9,167,044	-2
2005	9,192,477	0
2006	9,289,214	1
2007	9,372,253	1