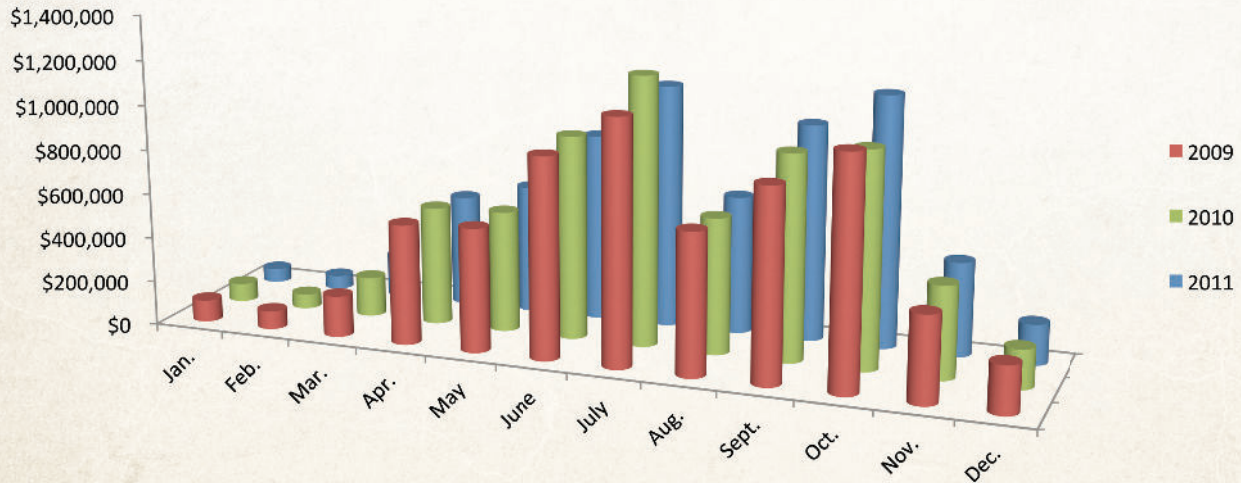


# Campground Revenue

Pigeon Forge has several campgrounds in the city limits. Many Pigeon Forge visitors own their own recreational vehicles (RVs) and the various campgrounds offer the opportunity to utilize them. Weather patterns often play a role in the number of people staying in campgrounds each month.



## 2011 CAMPGROUND REVENUE

Month	Gross Business	% of Change
January	\$62,488	-24
February	\$61,172	-6
March	\$189,881	7
April	\$499,468	-6
May	\$575,429	6
June	\$838,822	-8
July	\$1,089,109	-9
August	\$617,738	2
September	\$967,281	5
October	\$1,123,275	17
November	\$421,243	2
December	\$182,235	4
Total	\$6,628,141	1

## 2010 CAMPGROUND REVENUE

Month	Gross Business	% of Change
January	\$81,853	-16
February	\$64,962	-20
March	\$176,738	-4
April	\$531,490	-1
May	\$542,445	-2
June	\$910,817	1
July	\$1,200,894	10
August	\$608,350	-4
September	\$918,266	7
October	\$963,805	-6
November	\$414,075	7
December	\$175,433	-18
Total	\$6,589,128	0

## 2009 CAMPGROUND REVENUE

Month	Gross Business	% of Change
January	\$97,137	-7
February	\$81,406	-3
March	\$184,507	-26
April	\$538,794	4
May	\$555,311	8
June	\$899,485	0
July	\$1,093,236	8
August	\$636,620	-8
September	\$860,577	11
October	\$1,027,835	8
November	\$387,775	7
December	\$214,134	-7
Total	\$6,576,817	2

## PRIOR YEARS' CAMPGROUND REVENUE

Year	Gross Business	% of Change
1990	\$2,846,832	26
1991	\$2,892,057	2
1992	\$3,098,560	7
1993	\$3,471,623	12
1994	\$3,835,429	10
1995	\$4,157,979	9
1996	\$4,105,086	-1
1997	\$4,496,780	10
1998	\$4,816,103	7
1999	\$5,276,466	10
2000	\$4,963,671	-6
2001	\$5,332,181	7
2002	\$5,817,978	9
2003	\$5,981,350	3
2004	\$6,127,281	2
2005	\$6,356,107	4
2006	\$6,825,018	7
2007	\$7,055,072	3
2008	\$6,418,901	-2