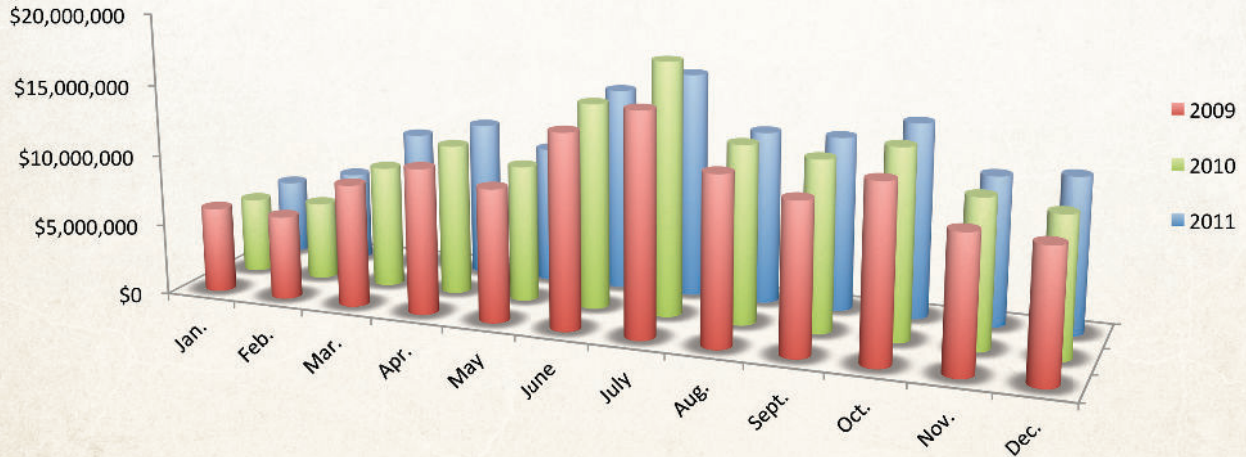


# Restaurant Revenue

Pigeon Forge features locally owned restaurants and regional or national chain restaurants with varying menu options. Every price point is available to those dining out. Each year, new restaurants open on the Parkway and surrounding area, further increasing its seating capacity and offerings.



## 2011 RESTAURANT REVENUE

Month	Gross Business	% of Change
January	\$5,288,395	0
February	\$6,374,422	16
March	\$9,813,425	14
April	\$10,960,402	3
May	\$9,634,316	0
June	\$14,314,279	-1
July	\$15,822,546	-11
August	\$12,164,264	-3
September	\$12,248,655	2
October	\$13,677,610	3
November	\$10,507,043	1
December	\$10,951,253	12
Total	\$131,756,610	1

## 2010 RESTAURANT REVENUE

Month	Gross Business	% of Change
January	\$5,306,020	-12
February	\$5,487,740	-7
March	\$8,601,679	-1
April	\$10,642,251	3
May	\$9,621,538	3
June	\$14,470,554	6
July	\$17,754,773	14
August	\$12,518,979	6
September	\$11,990,734	13
October	\$13,264,889	8
November	\$10,418,610	9
December	\$9,800,373	6
Total	\$129,878,140	6

## 2009 RESTAURANT REVENUE

Month	Gross Business	% of Change
January	\$6,006,134	6
February	\$5,906,598	-5
March	\$8,669,934	-9
April	\$10,297,418	7
May	\$9,376,840	0
June	\$13,681,399	-2
July	\$15,573,471	-5
August	\$11,831,712	-5
September	\$10,581,041	0
October	\$12,321,859	-1
November	\$9,560,999	-2
December	\$9,249,474	-9
Total	\$123,056,879	-3

## PRIOR YEARS' RESTAURANT REVENUE

Year	Gross Business	% of Change
1990	\$44,068,253	10
1991	\$48,004,868	9
1992	\$53,891,441	12
1993	\$58,927,028	9
1994	\$67,668,291	15
1995	\$73,880,879	9
1996	\$75,419,545	2
1997	\$83,209,974	10
1998	\$90,392,778	9
1999	\$89,052,931	-1
2000	\$88,338,175	-1
2001	\$93,298,144	6
2002	\$95,231,679	2
2003	\$93,773,453	-2
2004	\$102,950,172	10
2005	\$113,543,670	10
2006	\$122,840,527	10
2007	\$125,976,608	8
2008	\$126,301,521	0