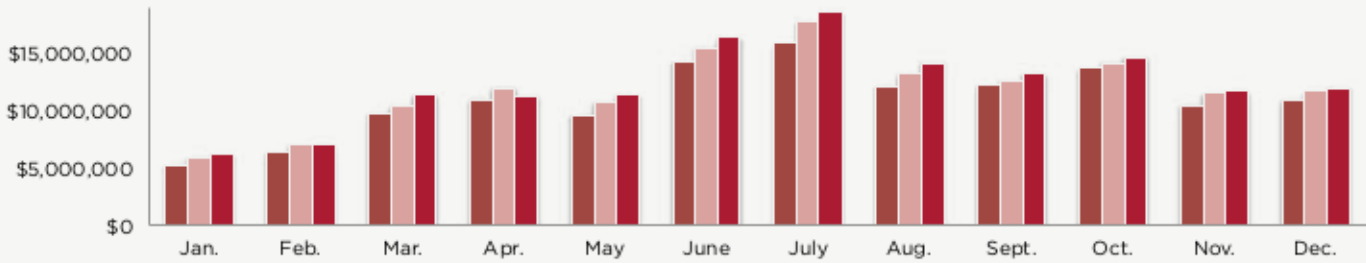




Going out to eat remains one of the most popular visitor activities. Pigeon Forge features locally owned restaurants and regional or national chain restaurants with varying menu options. Every price point is available to those dining out. Each year, the city adds new restaurants to the Parkway and surrounding area, further increasing its seating capacity and offerings. Pigeon Forge began collecting a new one-percent restaurant tax on January 1, 2014.

Restaurant Revenue



Legend

2013

2012

2011

2013

Month	Gross Business	% Change
Jan.	\$6,154,514	3
Feb.	\$6,928,142	-1
Mar.	\$11,385,448	9
Apr.	\$11,257,759	-7
May	\$11,382,189	6
June	\$16,344,136	6
July	\$18,512,480	4
Aug.	\$14,226,388	8
Sept.	\$13,220,541	5
Oct.	\$14,661,348	3
Nov.	\$11,673,662	2
Dec.	\$11,969,295	3
Total	\$147,715,902	4

2012

Month	Gross Business	% Change
Jan.	\$5,962,871	13
Feb.	\$6,973,447	9
Mar.	\$10,449,034	6
Apr.	\$12,050,798	10
May	\$10,780,426	12
June	\$15,486,110	8
July	\$17,731,819	12
Aug.	\$13,220,992	9
Sept.	\$12,568,879	3
Oct.	\$14,235,393	4
Nov.	\$11,485,639	9
Dec.	\$11,622,738	6
Total	\$142,568,146	8

2011

Month	Gross Business	% Change
Jan.	\$5,288,395	0
Feb.	\$6,374,422	16
Mar.	\$9,813,425	14
Apr.	\$10,960,402	3
May	\$9,634,316	0
June	\$14,314,279	-1
July	\$15,822,546	11
Aug.	\$12,164,264	-3
Sept.	\$12,248,655	2
Oct.	\$13,677,610	3
Nov.	\$10,507,043	1
Dec.	\$10,951,253	12
Total	\$131,756,610	1

PRIOR YEARS

Year	Gross Business	% Change
1996	\$75,419,545	2
1997	\$83,209,974	10
1998	\$90,392,778	9
1999	\$89,052,931	-1
2000	\$88,338,175	-1
2001	\$93,298,144	6
2002	\$95,231,679	2
2003	\$93,773,453	-2
2004	\$102,950,172	10
2005	\$113,543,670	10
2006	\$122,840,527	10
2007	\$125,976,608	8
2008	\$126,301,521	0
2009	\$123,056,879	-3
2010	\$129,878,140	6